

# Advanced Filter Desk Consoles



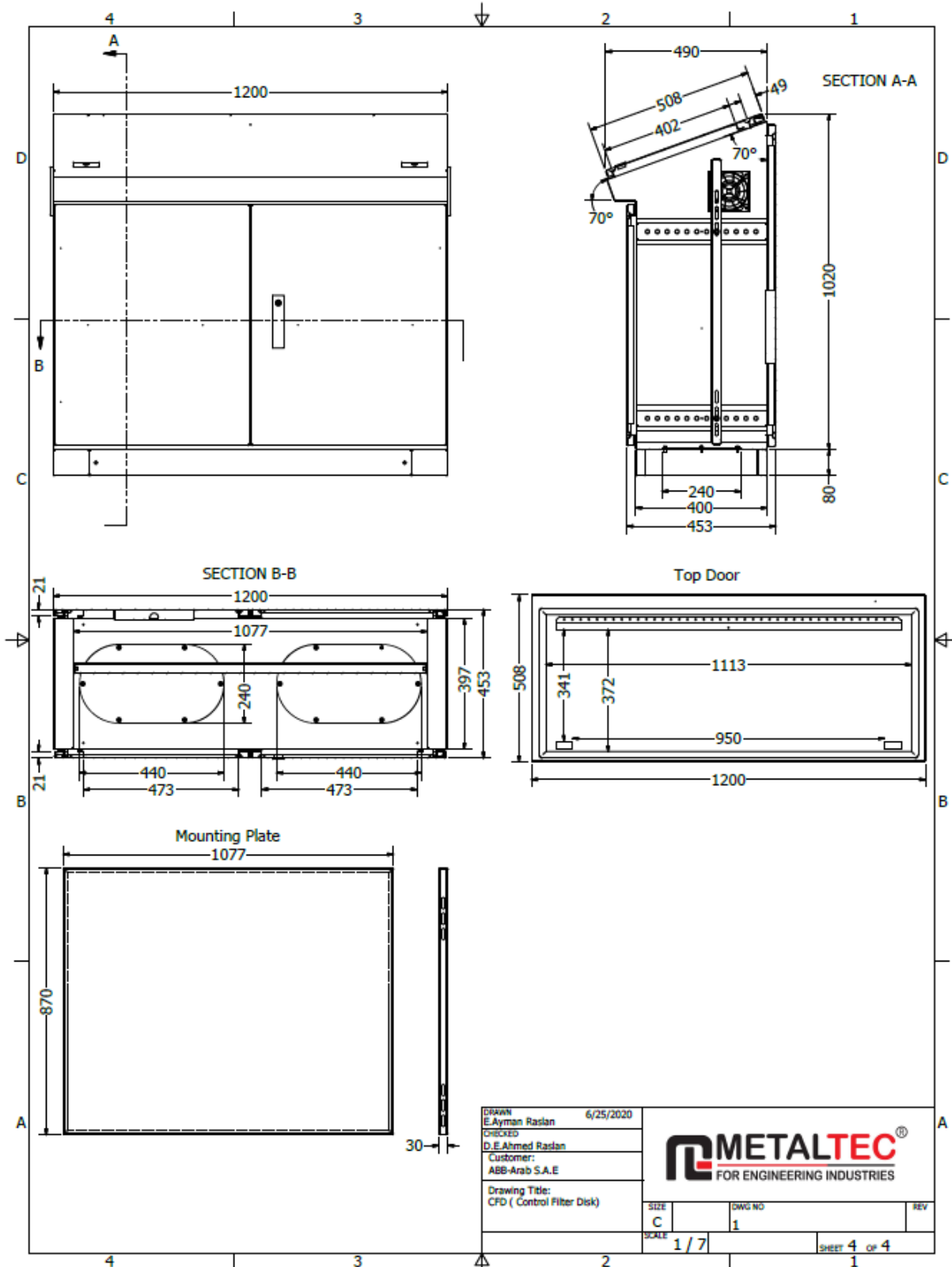
*AFDC-GS-120-SA*

*10/7/2020*

## Product Specifications

Basic material:	ASTM A653 Steel Sheet - Zinc-Coated ( <b>Galvanized Steel Sheets</b> ).
Material thickness:	Enclosure: 1.5 mm Door and console cover: 2.0 mm Mounting plate: 3.0 mm
Surface finish:	Enclosure, cover and door: Dipping degrease and phosphating then epoxy based powder-coated on the outside and inside, textured paint. Mounting plate: Zinc-plated.
Color:	RAL 7035
Protection category (IP)	IP 54 with selection of the appropriate gland plates, doors and console cover all-round foamed-in PU seal.
Protection category NEMA:	NEMA 13 with selection of the appropriate gland plates.
IK Code :	IK08
Supply includes:	Enclosure with doors at front with locking rod, blind back cover at rear, fan and double filters at solid sides. Adjustable Mounting plate on depth direction. Cover hinged at rear, 2 stays with automatic locking, manual unlocking on the right and left. Open base for individual cable entry.
Note:	For the double access doors, the base opening is divided in two, and two packs of gland plates.

# Product Dimensions

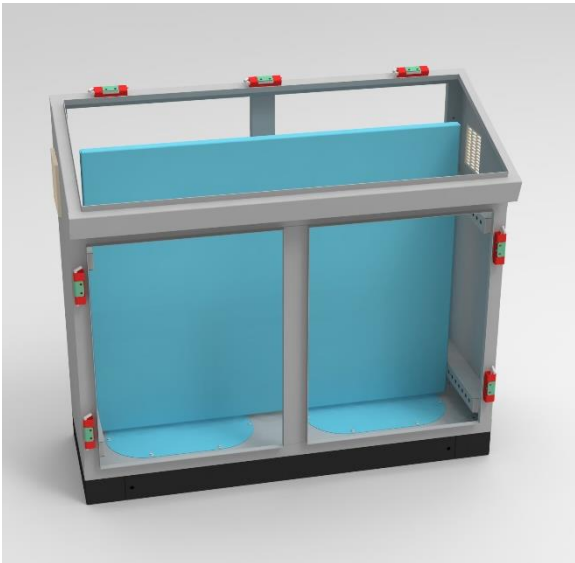
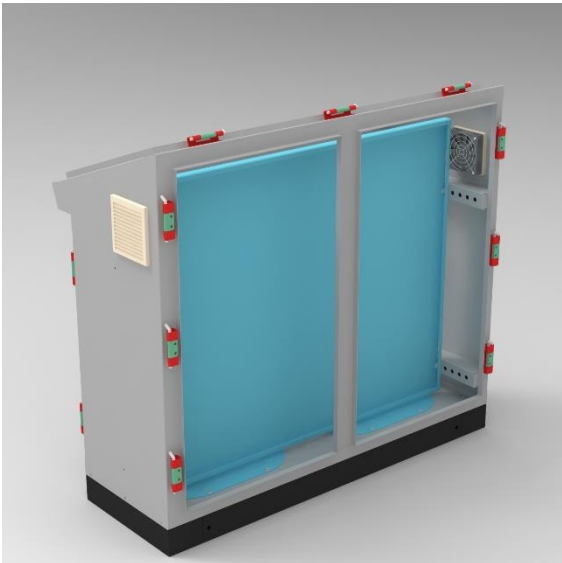


# Product Details

## Front View



## Inside View



# Accessories Details

## ACCESSORIES

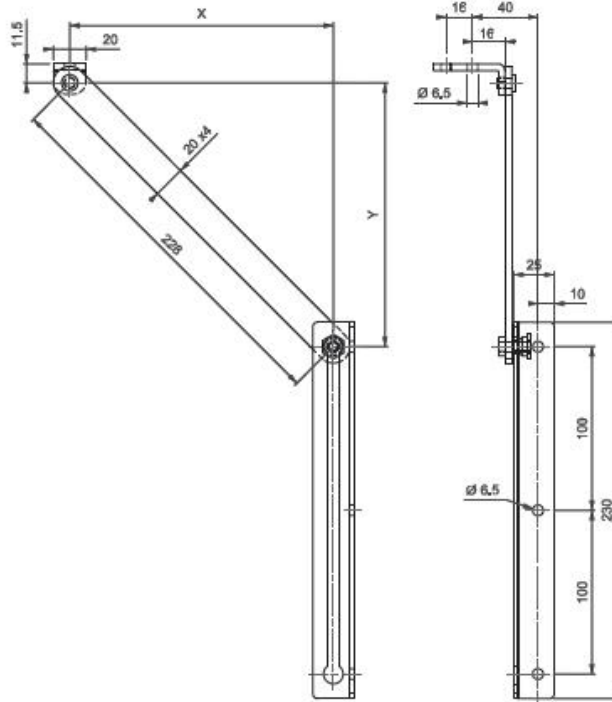
COVER STAY

179



- Stainless steel version: page 521
- Cover Stay with automatic lock to keep the door open
- LH and RH application is possible

**MATERIAL**  
Steel  
**FINISH**  
Zinc plated

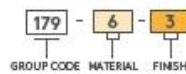


Installation dimensions

OPENING ANGLE	DIMENSIONS		MINIMAL DOOR WIDTH
	X	Y	
90°	140	180	405
105°	120	166	390
120°	110	150	375
135°	100	146	370

For other configurations:  
 $y = X + \text{min.} 40$

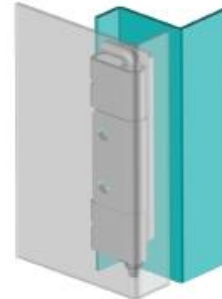
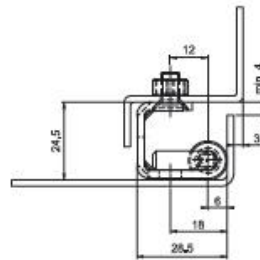
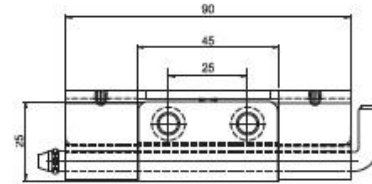
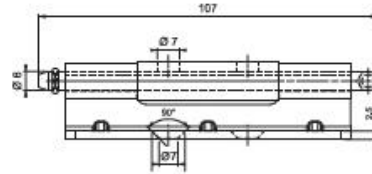
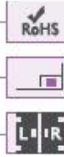
**PRODUCT CODE**



## CONCEALED HINGES

CONCEALED HINGE

995



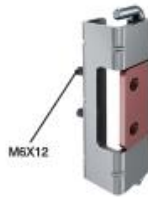
- Stainless Steel version: page: 495
- Side part can be mounted with M5 screws
- Centre part copper plated for easy welding
- Suitable for heavy-duty applications
- Suitable for 25 mm bend door cabinets

MATERIAL  
Steel

FINISH  
BODY: Zinc plated  
WELDING PART: Copper plated

▲ Note: Bolts are not supplied

Stud version

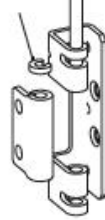


Hinge Rotation Angle

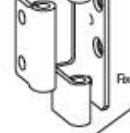


▲ Note: Nuts are not supplied

Fixed by clips



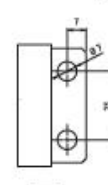
V : 4



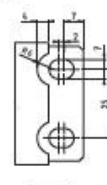
V : 3

Fixed by O'ring

Middle Parts

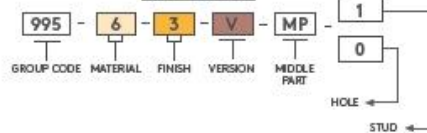


MP :1  
Circle



MP  
Slot

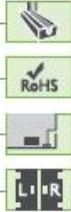
PRODUCT CODE



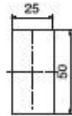
## ▶ QUARTER-TURN LOCKS

QUARTER-TURN LOCK

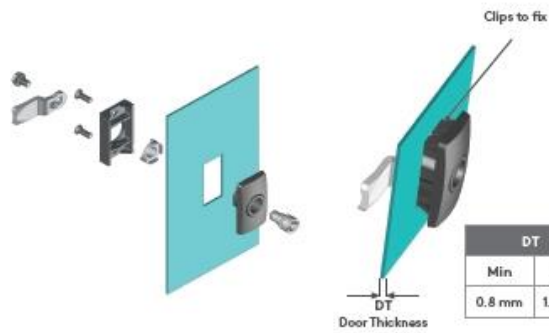
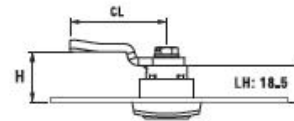
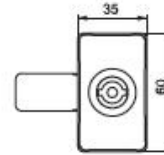
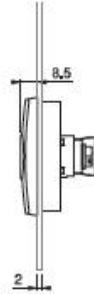
103



**MATERIAL**  
**BODY:** PA6 GFR 30  
**DRIVER:** Zamak DIN-EN 1774-ZnAl4Cu1 or PA6 GFR 30  
**CAM:** Steel  
**GASKET:** Polyurethane



Cut Out



DT	
Min	Max
0.8 mm	1.8 mm

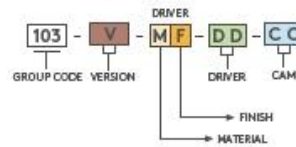
V : 1

V : 6

Clips to fix

For cams please check pages: 170 - 171  
 For drivers please check page: 194  
 For keys please check pages: 189 - 191

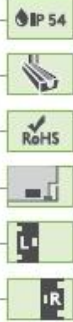
### PRODUCT CODE



## ROD-LATCH SYSTEM

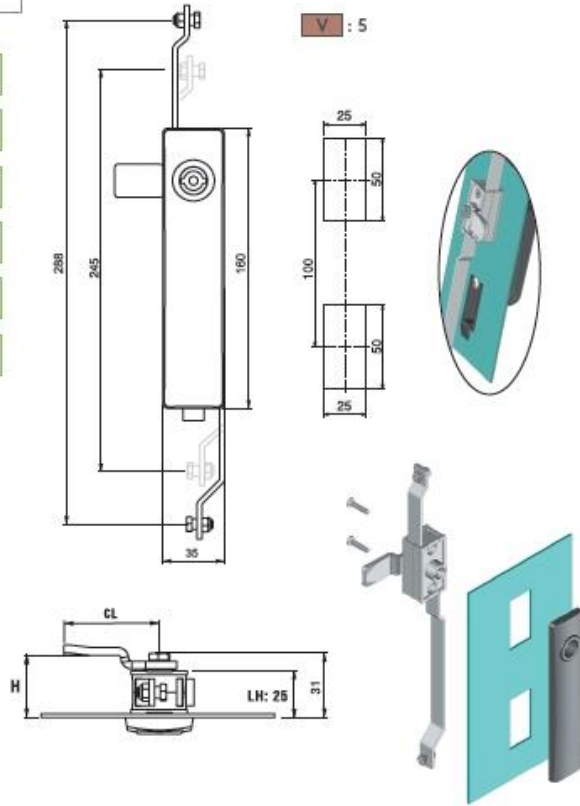
### THREE-POINT LOCK

203

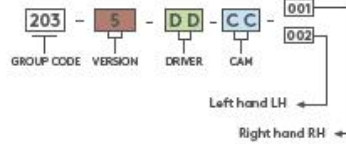


- Clip fixing for easy assembly
- Integral gear-box for three-point locking

**MATERIAL**  
**BODY:** PA6 GFR 30  
**MECHANISM:** Zamak DIN-EN 1774-ZnAl4Cu1  
**CAM:** Steel  
**SEAL:** Polyurethane



#### PRODUCT CODE



#### DRIVERS

3 mm Double bit	5 mm Square	9 mm Triangular
15	28	39

- For cams please check pages: 072 - 173
- For rods please check pages: 078 - 188
- For keys please check pages: 189 - 191